



Brief Corporate Profile



Our lineage

Brief Background

The promoters of Veritaz come with a heritage of Retail & Textiles Background. With the above experience of running various enterprises in these verticals & industries, the promoters set out to create Veritaz Ventures Advisory Pvt. Ltd. A company largely involved in M&A, Implementation and Advisory activities. This company is backed by strong Project Management & retail experience with people established in their fields with prior industry knowledge.

The company had also funded Retail Businesses and had established a Retail Consultancy practice to implement Retail Projects PAN INDIA in the Private Sector.

Among its activities it is also currently undertaking Retail and interior Projects in the Apparel, Lifestyle and Textile spaces in Tamil Nadu and Delhi(NCR) and is working with PVT. And Govt. (PSU's) entities.



Our lineage ...cont.

- The company is commissioned to capture the opportunity in the fields of :

Advisory

- Retail – Market Study and Positioning
- Consumer Products
- Branding & Brand Development
- Office & Store Interiors
- Mergers & Acquisition
- Strong focus on Government
- Projects

Project Execution

- Retail Roll out and Expansion of stores across the country
- In-store Merchandising and branding



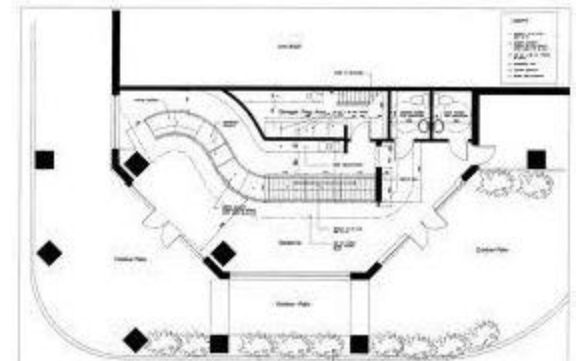
About Us

- We are a boutique Retail Advisory & Project Delivery & Execution company formed by professionals with a consolidated experience of more than 40 years. With our strategic partners and *consortium*, we operate in the following sectors:
 - Office & Commercial Interiors
 - Retail
 - Consumer Products
 - Branding & Brand Development
 - Infrastructure
 - Mergers & Acquisition
 - Strong focus on Government Projects



Services

- Office, Commercial & Operations Interiors
 - Design & Concept Development
 - Office Interiors Execution
 - Retail Interiors Execution
 - Complete capability from design to execution
 - Strong Project Management



Services

- Retail & Consumer Products
 - Entry Level, Sustenance & Growth Strategy Development
 - Business Planning
 - Implementation Planning
 - Operations Optimization
 - Store Design
 - Merchandize Planning
 - Sourcing
 - Launch Planning & Hand holding
 - Store Interiors Execution
 - Branding & Brand Development
 - India Entry Strategy



Services

- Branding & Brand Development
 - Brand Strategy
 - Brand Development
 - Market Study & Due Diligence
 - Change Management
 - Brand Implementation



Projects

Execution



Planning & Design – Commercial Projects

Client: Govt. Grade A – Public Sector Undertaking

Requirement: Modernization & remodeling of Commercial Areas & retail Chain

Project: PHASE 1 = 20,000 Sq.Ft.

Basis: Turn Key

Locations: Tamil Nadu, Delhi – NCR

Client: Govt. Grade A – Public Sector Undertaking

Requirement: Modernization & remodeling of Commercial Areas & retail Chain

Project: PHASE 2= 24,000 Sq.Ft.

Basis: Turn Key & Live execution

Locations: Tamil Nadu, NCR , Gujarat, Rajasthan, Karnataka

Client: Govt. Grade A – Public Sector Undertaking

Requirement: Modernization & remodeling of Commercial Office Space

Project: 22,000 Sq.Ft.

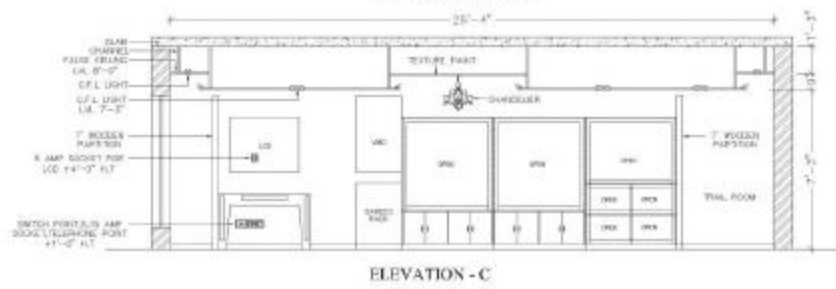
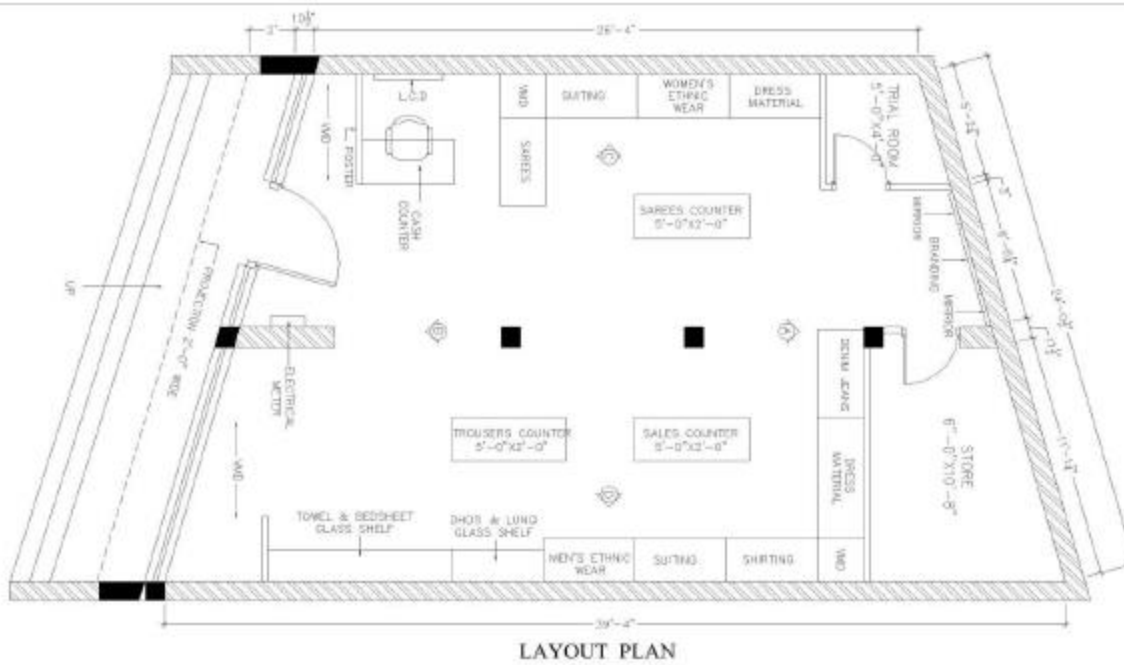
Basis: Turn Key & live

Location: Scope Complex, New Delhi



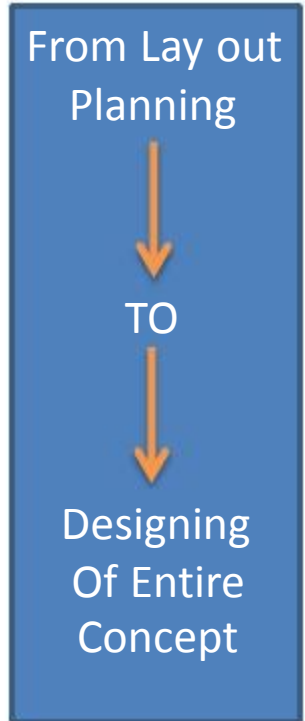
Project Planning & Designing

Planning & Design - Commercial Project

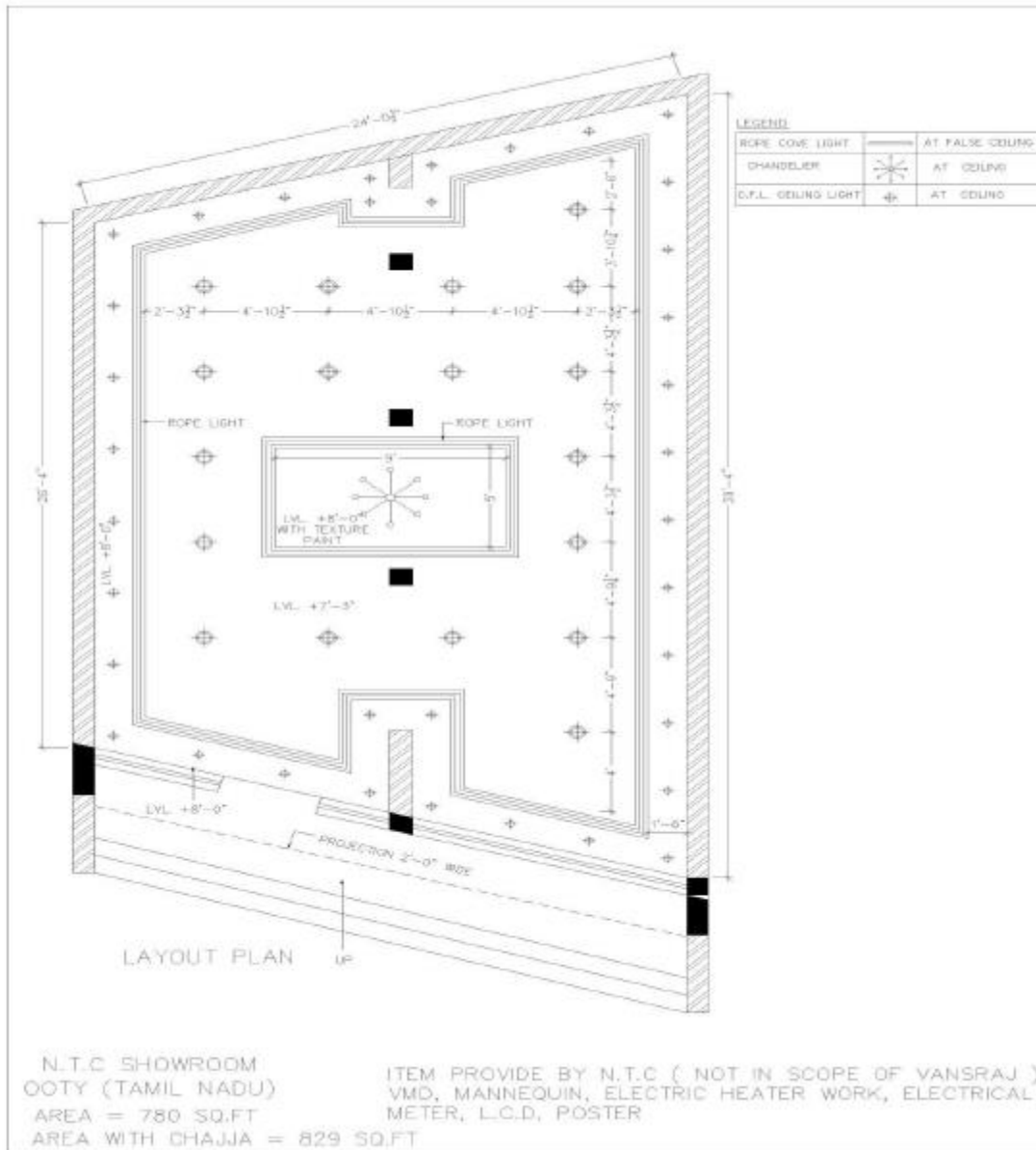


N.T.C SHOWROOM
OOTY (TAMIL NADU)

ITEM PROVIDED BY N.T.C (NOT IN SCOPE OF VANSRAJ)
VMD, MANNEQUIN, ELECTRIC HEATER WORK, ELECTRICAL
METER, L.C.D, POSTER



Planning & Design - Commercial Project



From Ceiling
Layout Plan

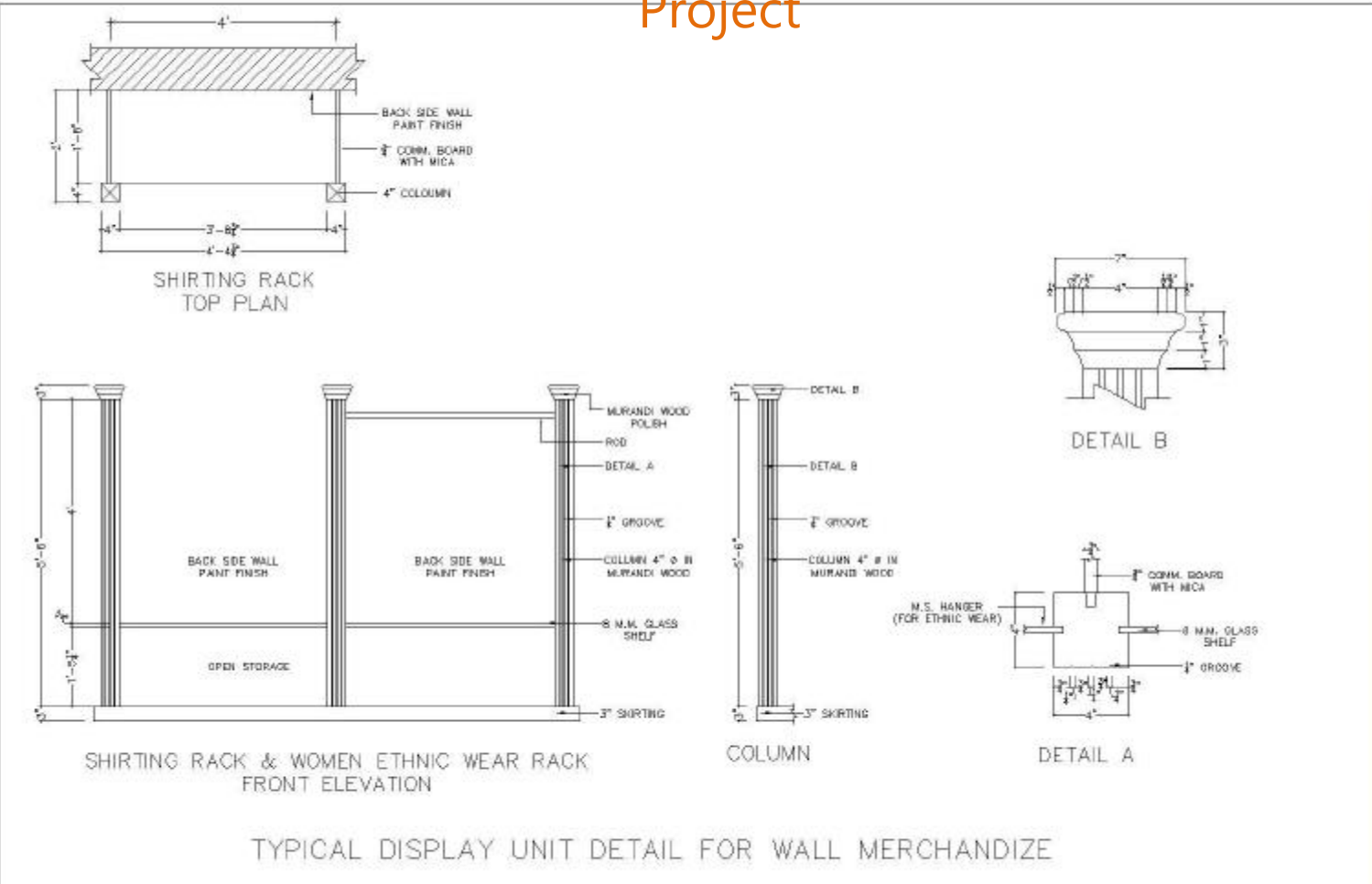


TO



Designing
Of Phase wise
Execution

Planning & Design - Commercial Project



From Designing of Racking System

↓

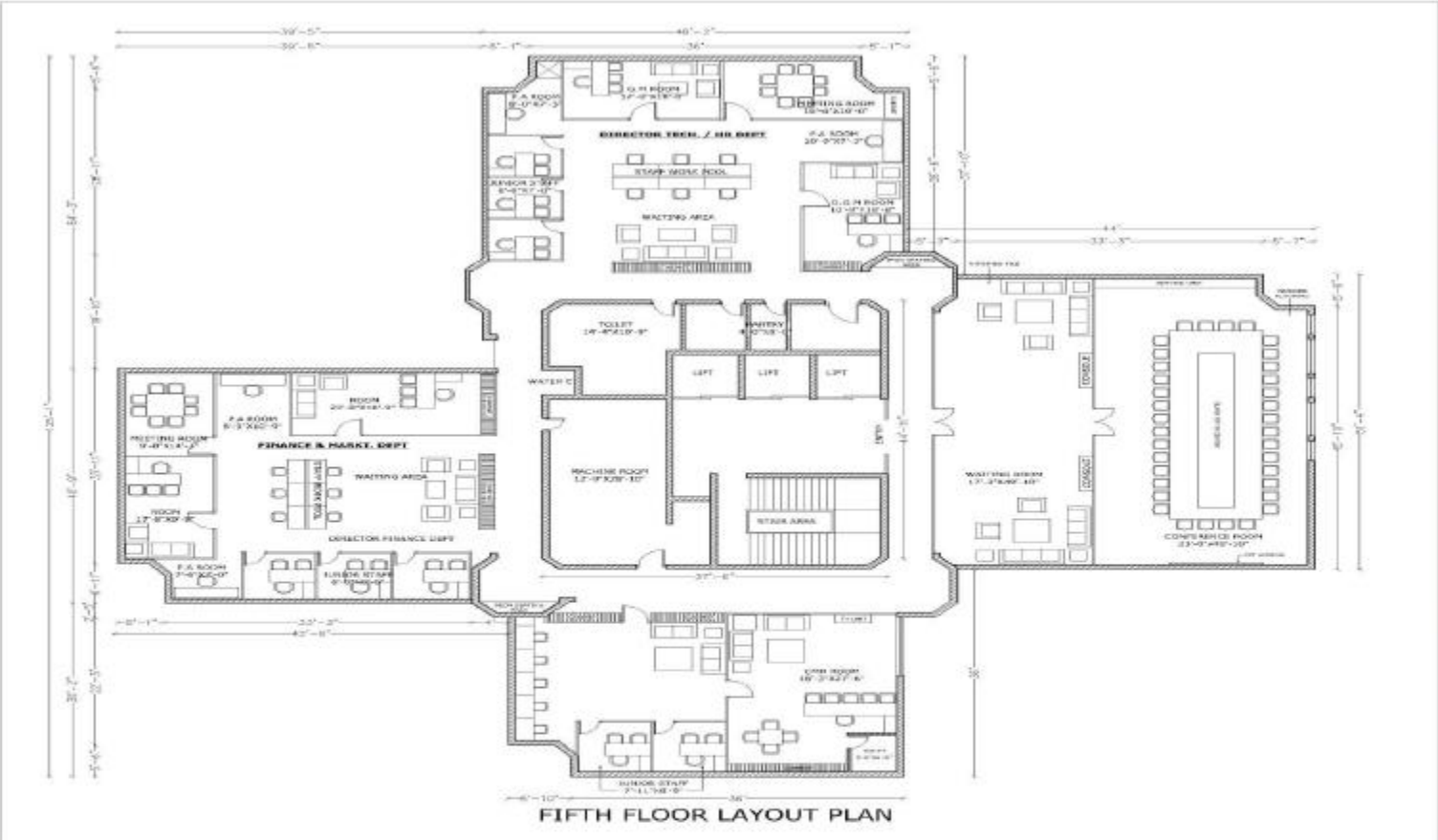
TO

↓

Installation and Range planning



Planning & Design - Commercial Project



Floor Plan Layout

↓

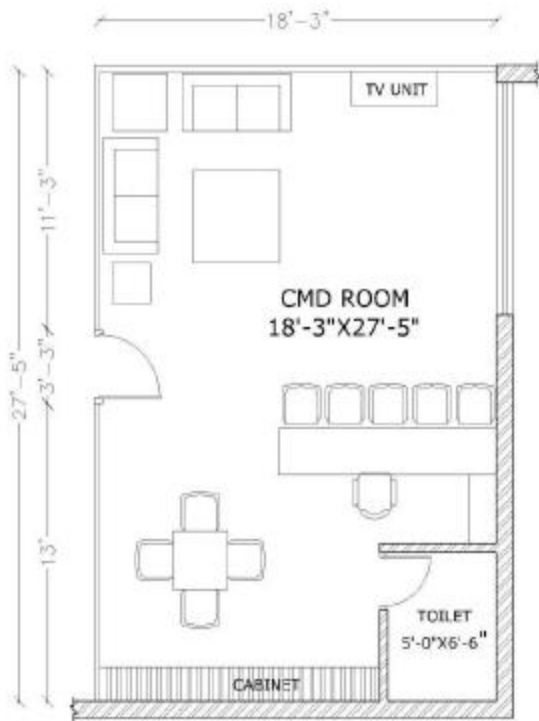
Optimal space utilization

INTERIOR DESIGNER :-
DATE :- 28-06-11
TITLE :- N.T.C OFFICE FIFTH FLOOR LAYOUT PLAN
DEALT BY :- BALJEET SINGH

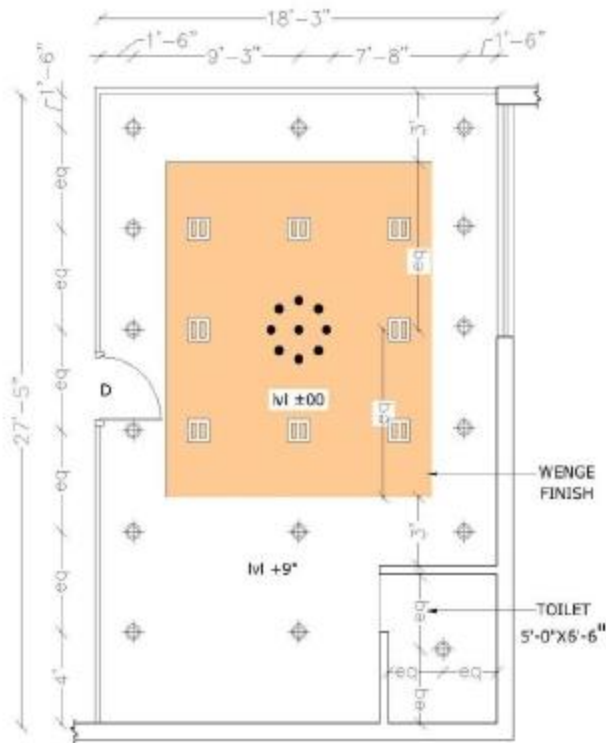
PROJECT :-
SCOPE BUILDING LODHI ROAD NEW DELHI



Planning & Design - Commercial Project



CMD ROOM LAYOUT PLAN 18'-3"X27'-5"



CMD ROOM CEILING ELECTRICAL PLAN 18'-3"X27'-5"

Layout for CMD Seating Plan

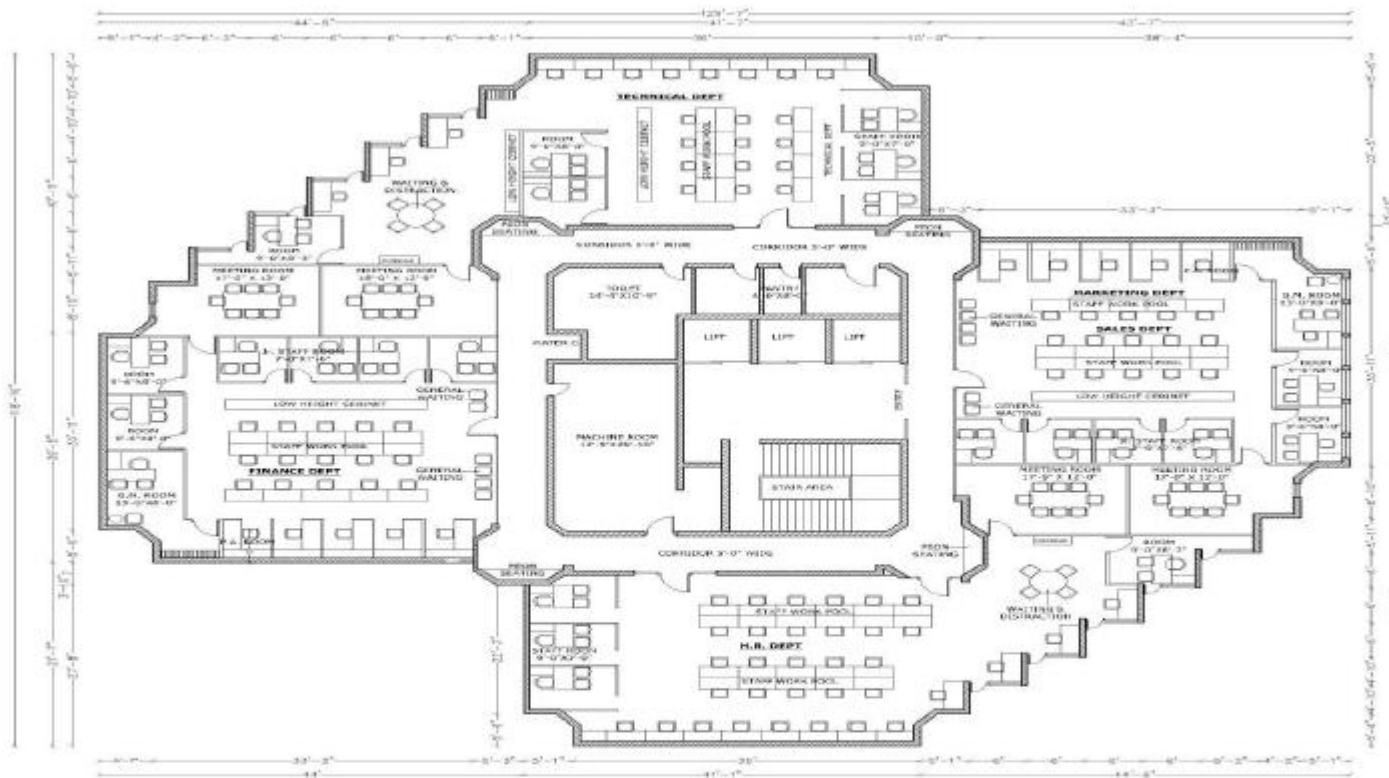
LEGEND

CHANDELIER		AT CEILING
C.F.L. CEILING LIGHT		AT CEILING
CEILING LIGHT		AT CEILING

INTERIOR DESIGNER :-
DATE :- 28-06-11
TITLE :- N.T.C OFFICE FIFTH FLOOR C.M.D. ROOM LAYOUT & ELECTRICAL PLAN
DEALT BY :- BALJEET SINGH

PROJECT :- SCOPE BUILDING LODHI ROAD NEW DELHI

Planning & Design - Commercial Project



SIXTH FLOOR PLAN

Experience in Handling Existing Structures and Developing New Build Out Facilities for Interior fit outs

INTERIOR DESIGNER :-

DATE :- 28-06-11

TITLE :- N.T.C OFFICE SIXTH FLOOR LAYOUT PLAN

DEALT BY :- BALJEET SINGH

PROJECT :-

SCOPE BUILDING LODHI ROAD NEW DELHI



Thank You!

